

UPPER PILUWA KHOLA -3 HYDROELECTRIC PROJECT (4.95 MW)

Sankhuwasabha, Nepal

Monthly Progress Report –Jestha 2079

Date: 5th Ashadh, 2079



Submitted by:

Mabilung Energy Limited.

Lalitpur-10, Nepal

Table of Contents

SALIENT FEATURES	4
1 GENERAL	8
2 PROJECT OVERVIEW	8
3 GENERAL WORKS	9
4 CONSTRUCTION WORKS	10
4.1 CIVIL WORKS	10
4.1.1 HEAD WORKS.....	10
4.1.2 GRAVEL TRAP, DESANDER AND FORE BAY.....	10
4.1.3 WATERWAY ALIGNMENT.....	10
4.1.4 POWER HOUSE (FOREBAY, PH AND TAIL RACE).....	10
4.2 HYDRO MECHANICAL WORKS	10
4.3 ELECTROMECHANICAL WORKS	11
4.4 TRANSMISSION LINE	11
5 FURTHER WORK PLAN	11
6 PHOTOGRAPHS	12

List of Figures

Figure 6.1: Undersluice slab concreting.....	12
Figure 6.2: Formworks at Undersluice wall from downstream.....	12
Figure 6.3: Undersluice upstream bay and divide wall.....	13
Figure 6.4: Guide wall and undersluice upstream slab from river side.	13
Figure 6.5: Guide wall panel -2 after final concreting.	14
Figure 6.6: Intake base slab and wall.	14
Figure 6.7:Cobble flushing gate structures along with Intake shear wall.	15
Figure 6.8:Installation of first stage embedded parts at undersluice gate and stoplog.	15
Figure 6.9:Gate grooves after concreting.	16
Figure 6.10: River training works upstream of headworks.....	16
Figure 6.11: Gravel trap and desander inlet base preparation	17
Figure 6.12:Track Widening for pipeline alignment from desander downstream side.	17
Figure 6.13:Track Widening for pipeline alignment after rocky cliff.....	18
Figure 6.14:Track widening for pipeline alignment	18
Figure 6.15:Track Widening for pipeline alignment.	19
Figure 6.16:Track Widening for pipeline alignment.	19
Figure 6.17: Track widening for waterway alignment.....	20
Figure 6.18: Track Widening for Headrace Pipeline Alignment.....	20
Figure 6.19: Excess road from powerhouse to surge tank.	21
Figure 6.19: Powerhouse excavation work.....	21

SALIENT FEATURES

1. Project Details

Project Name	:	Upper Piluwa Khola 3 Hydroelectric Project
Location	:	Madi & Chainpur Municipalities, Sankhuwasabha
Geographical Coordinates	:	Latitude: 27° 17' 42"N and 27° 18' 04"N Longitude: 87° 24' 22"E and 87° 25' 30"E
Type of Scheme	:	Run off River
Installed Capacity	:	4.95 MW
Gross Head	:	128 m
Rated Design Head	:	116.7 m

2. Hydrology

Catchment Area	:	83.70 km ²
Mean Annual Precipitation	:	1500 mm
100 years Design Flood (HW)	:	259 m ³ /s
Design Discharge - Piluwa Khola	:	4.11 m ³ /s
- Sikhuwa Khola	:	0.91 m ³ /s
Mean Annual Discharge- Piluwa Khola	:	6.0 m ³ /s
- Sikhuwa Khola	:	1.34 m ³ /s
Riparian Release - Piluwa Khola	:	96 lps
- Sikhuwa Khola	:	21 lps

3. Headworks

Diversion Structure	:	Concrete overflow weir with undersluice
Length of Weir	:	25.0 m
Weir crest Elevation	:	EL 1162 masl
Height of Weir	:	7.0 m from bed level at weir
Undersluice	:	3 m x 1.75 m – 2 nos
Sill Level	:	1157 masl
Intake Type	:	Side Intake

Size of Opening (B x H) : 3.0 m x 1.2 m - 2 nos
Sill Level : 1160.40 masl

4. Gravel Trap

Type : Rectangular RCC
Particle Size to be settled : 5 mm
Size of Gravel Trap : 8.0 m x 3.3 m (L x B)

5. Approach Canal

Type : RCC Rectangular
Size : 2.2 m x 2.2 m (B x H)

6. Desander

Type : Dufour, double bay
Particle Size to be settled : 0.20 mm
Size of Desander : Each bay of 45 m x 6.4 m (L x B)

7. Sikhuwa Diversion Scheme

Type : Concrete overflow weir
Intake : Side intake of 1.5 m x 0.7 m, 2 nos
Gravel Trap : 2 m deep, 5.0 m long and 1.5 m wide
Transfer Pipe : 0.9 m diameter MS Pipe, 170 m long

8. Headrace Pipe

Total Length : 1398 m
Type : MS-Pipe Buried and exposed section
Diameter of Pipe : 1.60 m dia with varied thickness 6 mm

9. Surge tank

Type : Restricted orifice
Size : 4 m diameter 23 m height

10. Penstock Pipe

Total Length : 395 m
Type : MS-Pipe Buried and exposed section

Diameter of Pipe : 1.40 m dia with varied thickness 8 mm to 10 mm

11. Powerhouse

Type : Surface
Dimension (l x b x h) : 23 m x 8.5 m X 11.40 m
PH Floor Level : EL. 1033.10 m
Turbine centerline Level : EL. 1033.50 m

12. Tailrace

Type : 2.0 m wide, 1.6 m high and 25.0 m long, RCC Box canal
Tailrace Water Level : EL 1034.0 m
Minimum Tail water level : EL 1033.57 m

13. Turbine

Type : 2 Nos. Horizontal Francis
Rated Discharge for each Turbine : 2.51 m³/s
Rated Output for each Unit : 2.592 MW
Rated Efficiency : 90%

14. Generators

Type : 2 Nos. Synchronous brushless, 3 \emptyset AC
Rated Voltage : 6.6 kV
Power Factor : 0.85
Layout : Horizontal
Synchronous speed : 1000 rpm
Rated Efficiency : 96.0 %
Rated Output : 2930 kVA
Rated Frequency : 50 Hz

15. Power Transformer

Type : 1 No. 3 phase, 50 Hz Step up Transformer
Rated Efficiency : 99%

Rate Capacity	:	6000 kVA
Voltage Ratio	:	33kV/6.6kV

16. Transmission & Interconnection

Transmission line	:	Powerhouse Baneshwor substation, 14.0 km
Type of Circuit	:	Single Circuit 33 kV
Line Conductor	:	ACSR “dog”
Pole Type	:	Steel Tubular (11 and 13 m height)

17. Power and Energy

Installed Capacity	:	4.95 MW
Contract Energy after Outage & Loss	:	28.41 GWh
Wet Saleable Energy	:	23.51 GWh
Dry Saleable Energy	:	4.90 GWh

18. Construction Period : 2.0 Years

19. Financial Indicators

Total Project Cost	:	893.37 MNRs. (With IDC)
B/C	:	1.27
IRR	:	15.23 %
RoE	:	18.16 %

1 GENERAL

The progress report has been prepared for updating about the construction and administrative progress of the Upper Piluwa Khola 3 Hydroelectric Project (UPK3HEP).

This report includes the tasks completed till the month of Jestha, 2079. This report mainly focuses on the head office status, site office, site visit, design & construction of Project components.

2 PROJECT OVERVIEW

Upper Piluwa Khola-3 Hydroelectric Project is located along the Piluwa Khola between confluence area with Sikhuwa Khola and confluence area with Lakhuwa Khola. The project area lies in Madi and Chainpur Municipalities of Sankhuwasabha District, Province 1 in eastern Nepal, while waterway and powerhouse lies only on Madi Municipality. Chainpur is nearest market place from the project area. Project area is accessible by about 13 km road from Chainpur with a fair weather road. Present updated geographical boundary of project lies between latitude of 27° 17' 42"N and 27° 18' 04"N and longitude of 87° 24' 22"E and 87° 25' 30"E. The elevation at the proposed intake site is 1162 masl. The Project, optimized at an installed capacity of 4.95 MW, is a run-of-the-river type project with gross head of 128 m and design discharge of 5.02 m³/s. Net annual marketable energy to be generated from the Project is 28.41 GWh, out of which 4.90 GWh is dry season energy (Poush to Baisakah).

The Piluwa Khola is a tributary of Arun River. The basin lies in the eastern part of the Sankhuwasabha district. Elevation of the catchment ranges from 1160 m to 3525 m. The main stream flows from East to West direction. Catchment area at the intake site covers 83.70 km² out of which 15.18 km² is covered by Sikhuwa catchment and catchment at powerhouse is 98.50 km². Design flood at the proposed headworks has been taken 259 m³/s (Q100-year). The riparian release for environmental requirement is considered as 0.096 m³/s for Piluwa Khola and 0.021 m³/s for Sikhuwa Khola which corresponds to 10% of the driest month's flow of the river.

Geologically, the project area lies in Himal Group of Higher Himalayan Crystalline. Present study only covers the rock type and structures found within project area. Bed rocks are partially

exposed at steep slopes and cut bank and road cut sections. Most of the surface within project area is covered with soils.

A diversion weir on Sikhuwa diverts discharge of 0.91 m³/s from Sikhuwa Khola to approach canal from Piluwa Khola diversion works. A spilling weir at Piluwa Khola with two under sluices and two side intake openings will divert the design discharge of 5.02 m³/s to intake structure located at left bank of the river. The diversion structure is design for flood discharge of 259 m³/s. Headworks structure including side intake, gravel trap, approach canal and desander with fore bay are located on left bank of Piluwa Khola. The Headrace pipe from forebay to surge tank is aligned along left bank of Piluwa Khola. After 1360 m length of headrace pipe surge tank is located at left bank hillslope. After surge tank penstock pipe is proposed to be aligned on left bank of Piluwa Khola and the penstock line is designed to cross Lakhuwa Khola to reach Powerhouse. Powerhouse is located at left bank of Piluwa Khola near the confluence Piluwa Khola with Lakhuwa Khola. Powerhouse is dimensioned to accommodate two Francis turbine of horizontal configuration. The switchyard is located just upstream of powerhouse on left bank of Piluwa Khola. About 14 km long 33 kV transmission line connected to Baneshwar substation evacuated the Power generated from UP3HP.

The construction period of the Project has been taken to be 24 months. The total financial cost of the Project on the basis of rates as of January 2020 is estimated to be 893.37 MNRs. with IDC. The Project shall be financed from debt and equity ratio of 70:30 from financing institutions. Financial analysis has been undertaken with 11.75% interest rate on the long term loan yielding 15.23% IRR, 18.16% RoE, and B/C ratio of 1.27.

3 GENERAL WORKS

- Site visit of technical consultant (JADE consult) is made.
- Project Progress is physically inspected and IPC-01 and IPC-02 were verified by consultant engineers.
- River training work is carried out to minimize losses due to monsoon.

4 CONSTRUCTION WORKS

4.1 Civil Works

4.1.1 Head works

- i. Concreting of all base slabs of undersluice completed.
- ii. Vertical rebar erection for shear walls completed.
- iii. Installation of formwork for undersluice wall is in progress.
- iv. Bar installation for divide wall is completed.
- v. Formworks installation for divide wall is on progress.
- vi. Intake base slab is concreted.
- vii. Intake walls are concreted up to 90 cm height (1159.4m masl).
- viii. Concreting on guide wall panel -01 is completed (1166.0m masl)
- ix. Backfilling up to base slab top level is accomplished.

4.1.2 Gravel trap, Desander and fore bay

- i. Site clearance completed.
- ii. Earthwork in filling and compaction using roller in desander area is completed.
- iii. Excavation for gravel trap and approach canal is completed.

4.1.3 Waterway Alignment

- i. Project road from headworks to surge tank completed.
- ii. Track widening for waterway from 0+500 to 1+500m chainage is completed.
- iii. Track widening from 0+000 to 0+500m chainage is in progress.
- iv. Forest approval for tree cutting work from surge tank to powerhouse is in final stage.

4.1.4 Power House (Forebay, PH and Tail race)

- i. Layout for powerhouse are has finalized.
- ii. Site clearance completed.
- iii. Excavation work for powerhouse foundation is in progress.
- iv. Power house design work is in progress.

4.2 Hydro mechanical works

- i. Design review is completed.
- ii. Contract document for fabrication, supply, installation of trashrack, gates, stoplogs and steel pipe is prepared.
- iii. First stage embedded parts (ep's) for gate frame are delivered to site.
- iv. First stage ep's installed at cobble flushing and undersluice gate grooves.

4.3 Electromechanical Works

- i. Contract agreement to design, fabrication, supply, installation and commissioning of electromechanical components is accomplished.
- ii. Layout of powerhouse and switchyard is finalized.
- iii. All powerhouse drawings are issued by electromechanical supplier and approved by employer.
- iv. Single Line Diagram (SLD) of powerhouse and switchyard is finalized.

4.4 Transmission Line

- i. ToR of IEE for transmission line is finalized.
- ii. Bay allocation for rare substation at baneshwor substation is in final stage.
- iii. Detailed design report (DPR) of transmission line completed.
- iv. Presentation of ToR of IEE is presented to DoED officials.
- v. SLD for receiving substation is finalized.
- vi. Layout drawing of substation is finalized.

5 FURTHER WORK PLAN

The future work plan are as follows:

- Contract agreement to HM supplier to supply, fabricate and install pipe, gate, and accessories.
- IEE and Construction license of transmission line.
- Concreting on divide wall, Undersluice wall will be carried out in next month.
- Road widening for waterway alignment from 0+000 to 500m chainage.
- Track opening from surge tank to powerhouse.
- Design and issuing construction drawing of powerhouse, switchyard and substation.

6 PHOTOGRAPHS



Figure 6.1: Undersluice slab concreting.



Figure 6.2: Formworks at Undersluice wall from downstream



Figure 6.3: Undersluice upstream bay and divide wall.



Figure 6.4: Guide wall and undersluice upstream slab from river side.



Figure 6.5: Guide wall panel -2 after final concreting.



Figure 6.6: Intake base slab and wall.



Figure 6.7: Cobble flushing gate structures along with Intake shear wall.



Figure 6.8: Installation of first stage embedded parts at undersluice gate and stoplog.



Figure 6.9: Gate grooves after concreting.



Figure 6.10: River training works upstream of headworks.



Figure 6.11: Gravel trap and desander inlet base preparation



Figure 6.12: Track Widening for pipeline alignment from desander downstream side.



Figure 6.13:Track Widening for pipeline alignment after rocky cliff.



Figure 6.14:Track widening for pipeline alignment



Figure 6.15:Track Widening for pipeline alignment.



Figure 6.16:Track Widening for pipeline alignment.



Figure 6.17: Track widening for waterway alignment.



Figure 6.18: Track Widening for Headrace Pipeline Alignment

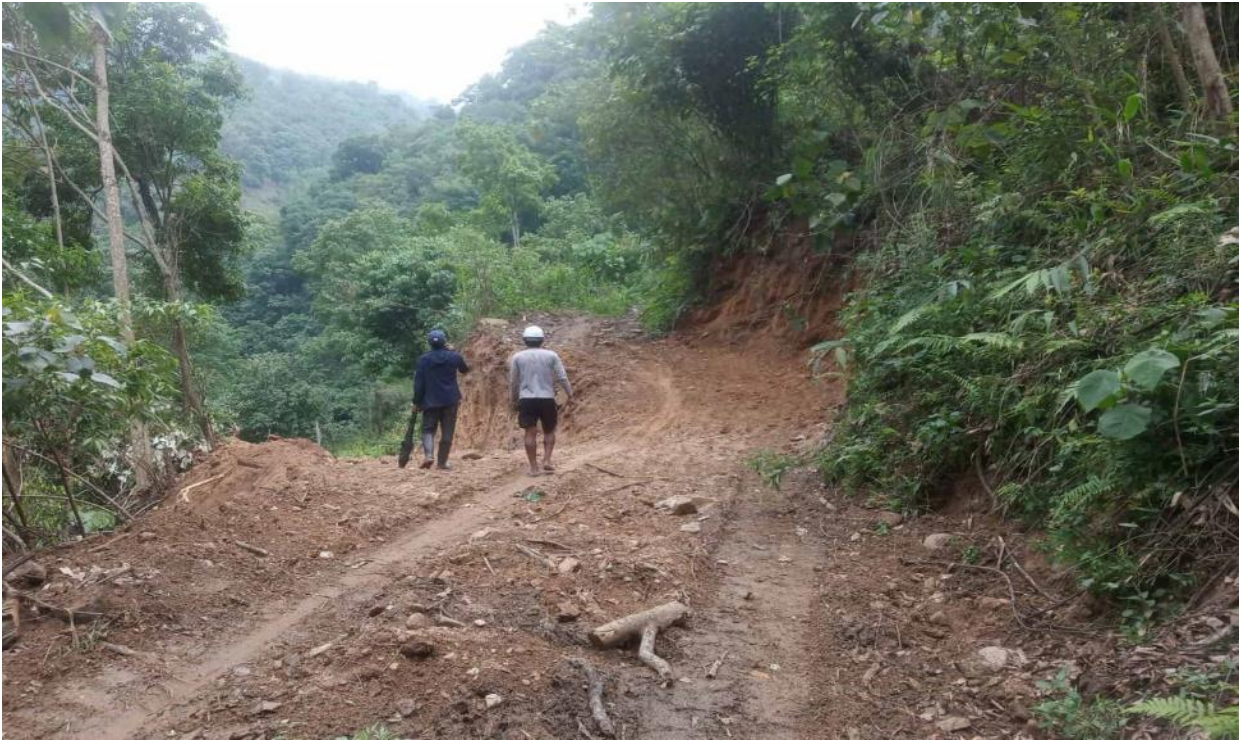


Figure 6.19: Excess road from powerhouse to surge tank.



Figure 6.20: Powerhouse excavation work.